

Bob's Snippet

On Otley Road three elderly car drivers each failed to light up the 30mph Slow Down sign

YORKSHIRE COUNTRYWOMENS ASSOCIATION

At our last meeting on Tuesday, 11th March we had a most entertaining speaker Susan George from "Virgin Vie" who demonstrated cosmetic products. We all enjoyed listening to this most vibrant lady who was so enthusiastic, not only about the products she was selling, but also about Richard Branson for whom she worked. She gave us a fascinating insight into the type of man he is and his generosity to his staff, taking them on holidays and cruises all over the world. Some of our ladies bought her wares and we all look forward to seeing these glamorous and smooth skinned ladies at our next meeting.

Our next meeting is on Tuesday 8th April, 2008 when all members will be treated to a free party to celebrate the 25th Anniversary of the Y.C.A. On this occasion we are having caterers in and will be entertained with Old Time Music Hall songs. Members may dress up especially with hats and feather boas, but however you come you will be most welcome. The list for the party is now closed and we have a full house. There will also be a quiz and a free raffle on this evening and hopefully a display of photographs of some of our past escapades.

On Monday 7th April, 2008 at 11am we will be holding a commemorative service in York Minster. Again all are welcome to attend but we cannot run a bus for this event as there were not enough people wanting to go.

Our next committee meeting is on Monday 31st March at the home of Mrs R. Green. The group meeting will be on Tuesday 8th May, 2008 and this will be our A.G.M. At this meeting you will be voting on our constitution and also on the next Committee and Chairman.

The Founder's Group meeting will be at Bramhope in June and we have organised a competition for the Rose Bowl. This is an A4 sized piece of card designed as an invitation to Y.C.A. 25th Anniversary celebrations. Any medium can be used but no computerised materials. Our group will hopefully bring along their cards on the night of the A.G.M. for us to choose who should go forward into the competition. Good luck to everyone.

WILKINSON & WHITLEY LTD.
ALL MODEL SERVICING MOT TESTING
TYRES BATTERIES
BRAKES WELDING
EXHAUSTS ALL MAKES
AIR CON. REPAIRS SERVICE LIGHT RESET
LIME STREET, BINGLEY 01274 562767



PHILIP DAVIES MP

To contact Philip ...

Call: 01274-592248

Email: daviesp@parliament.uk

Write to: House of Commons,
London, SW1A 0AA

Website:

www.philip-davies.org.uk

Eldwick & Gilstead Horticultural Society

Horticulturist Maurice Baren trained at Kew and Askham Bryan. These days he travels in five continents judging entries for the World in Bloom campaign. Last month he told Eldwick & Gilstead Horticultural Society about his work.

Blooming Wonderful

Looking out of the window of the Greyhound bus taking him through North America's cornbelt, Maurice Baren saw a familiar name on a sign in the middle of the prairie. It simply read: "This wheat is destined for Warburton's Bakery in England". Small world, he thought. Last month he told a well-attended meeting of the Eldwick & Gilstead Horticultural Society how ordinary people's pride in their surroundings had gone global in only 40 years - the *Village in Bloom* had become the *World in Bloom*.

Maurice was on one of his long-haul trips, judging entries for *The World in Bloom*. This is a campaign which had small beginnings across the Channel in the 1950s, when Gen. de Gaulle launched the *Flowering France* campaign to bring back national pride to villages recovering from World War II. Leading gardener Roy Hay brought the concept to our country, where it was named Britain in Bloom, and spawned its offshoot *Keep Britain Tidy*.

When the Royal Horticultural Society became involved in the 1990s and set up regional committees, the whole project mushroomed (perhaps burgeoned would be a better word). Today *Britain in Bloom* is the largest horticultural campaign in Europe and involves people in over 1,000 communities throughout the UK who take an active interest in caring for their local environment by breathing life into their local green spaces.

It began with villages and spread to towns and districts, until today the list of categories includes Small Village, Village / Large Village, Urban Communities, Towns and Cities, Coastal Resorts, Public and Private Establishments, Youth Awards and Places of Further Education, Public Houses and Restaurants, Guest Houses, Holiday Cottages & Small Hotels, Large Hotels, Visitor Attractions, Business Premises, Shopping Centres & Retail Parks; Caravan, Camping & Chalet Parks; Country Houses,

Estates, Parks and Gardens, New Housing Awards and Neighbourhoods.

As the Neighbourhood Awards pilot scheme takes off across the country, more communities are seeing the benefits of getting involved. The pilot was tried in Wales in 2003 and this year it is being tested in the North West, Yorkshire and London. It is hoped that all nations/regions will introduce Neighbourhood Awards over the next two years.

Whether it's a spot of gardening, cheering up flowerbeds, cleaning and greening up streets or starting a larger project for local regeneration, Britain in Bloom can help to bring your community together and make a real difference where you live.

Maurice told his audience that the spin-off from co-operative effort in a local community is both tangible and unquantifiable:

- * safe, neighbourhood green spaces
- * healthy, clean play areas
- * a new sense of pride
- * new skills, e.g. sowing, propagating, planting
- * growing of plants
- * socialising across different age ranges
- * new horizons - self-confidence as new skills are acquired
- * sense of shared ownership of a renovated environment
- * satisfaction of working in partnership in a common cause
- * fostering of previously undiscovered talents

Using slides taken in Europe, Asia and North America, Maurice showed how an appalling fly-tip was turned into a lovely railigned garden where children can play in safety, having helped to plant and create the space. We saw a flower-filled, lovingly tended garden created on a former no-go area which is now the focal point of an estate where people's lives have been changed beyond their wildest dreams by the experience gained in its creation.

These are the realisation of individual dreams of a better quality of life for their neighbourhoods, achieved in partnerships of many kinds. And the beauty of this category within Yorkshire in Bloom is that no one is competing with anyone else for recognition. Each entry is assessed against the Britain in Bloom criteria and each receives a certificate recognising the stage that has been reached. So that even a project just starting out where improvement is apparent will be awarded a Certificate of Improvement. The next stage up gets a Merit and where a high achievement is reached in a project then Outstanding is awarded. Why not go for it, Eldwick and Gilstead? **Mike Hitchen**

Our next meeting will be on Tuesday 20 May, when Steve Thorpe will describe A Hero for Healthy Eating.

In the meantime, don't miss the annual Spring show at the Memorial Hall on 26 April.

JOINER/HANDYMAN
- ALL TYPES OF FLOORING -
- SKIRTING - ARCHITRAVE -
- SHELIVING - HANDRAILS -
- DOORS - PARTITION WALLS -
- INTERNAL + EXTERNAL -
- GENERAL JOINERY REPAIRS -
NO JOB TOO SMALL - REASONABLE RATES
STEVEN 07966 062872 - 01274 596741

Piano/Organ Tuition

Robert Sudall

B.Mus (hons.) / grad. RNCM
(International award winning organist)

Tel: 01274 565820 /
07986 659034

www.robertsudall.com

Peter Marriott
PROPERTY SERVICES
For a local, reliable, quality & professional service to meet your home & garden maintenance needs.
Call me to discuss your requirements
Tel: 01274 781697 (Eldwick)
Mobile: 07985 050543

ELDWICK MEMORIAL HALL

It is with regret that we have received the resignation of Mr P. Abbott as our Treasurer, who will be finishing with us at the end of March.

We have been very fortunate to gain the services of Mrs Pauline Sibley as our new Treasurer who will take over from Patrick after the annual accounts have been audited. Our thanks go to both these hard working people for all the effort they put into the running of the Hall and the Birches as wonderful village organisations.

We have also received the resignation of our Booking Secretary Mrs Tracey Horsfall, due to other work commitments and moving house. Our thanks also to Tracey for keeping the bookings for us over the past year.

Mrs Sylvia Slater is once more taking the bookings for the Memorial Hall and anyone wanting to book this venue for their event should contact her on **01274 563081** or **Mike Harrison 01274 561265**.

As you may be aware we now have a Memorial Hall website where you can view available dates if you are wanting an event. However you will no longer be able to book by email as I always like to talk to people who are booking and ascertain their needs. You will also be able to leave me a message on my answer machine and I will return your call that day. I would appreciate it if you could make all your calls to me before 8.30pm. This would be a great help.

Also we no longer take bookings for parties for children over the age of 12. We do not accept any teenage parties/discos or bands as unfortunately we have had disturbances around the Hall and in the village store from teenage groups. In fact at the last private disco we had damage done to the water heater in the Gent's W.C. and this will now have to be replaced, and the light switch in the disabled toilet was also pulled off the wall and damaged and new parts had to be purchased for this.

It is a sad reflection on today's youth that the few always make it difficult for the majority.

All bookings between 6pm and midnight will be for adults only.

The Memorial Hall and The Birches Club are wonderful facilities which our village should be proud of and which attract bookings from all over the district. Please understand that without your support we would not be able to continue with such great village amenities.

BIRCHES/MEMORIAL HALL BOOKINGS Mike Harrison 561265

Dine out the Indian Way in High Style

at the

SHAMA TANDOORI of BINGLEY (Fully Licensed)

RELAXED & FRIENDLY ATMOSPHERE
LARGEST INDIAN VEGETARIAN
MENU IN THE AREA
FRESH INDIAN VEGETABLES USED.
OUR OWN UNIQUE TASTE

Open 7 nights a week.

Opposite Bradford &
Bingley Building Society,
above the precinct.

Booking Advisable - Tel: 569565.

✠ THE ELDWICK VILLAGE CHURCHES ✠

ST. LAWRENCE'S NEWS

APRIL

20th 8.00am Holy Communion
10.30am Morning Praise
(Short service followed by open forum on
mission & out-reach)

27th 10.30am Holy Communion

MAY

4th 8.00am Holy Communion
10.30am Morning Worship
11th 10.30am Holy Communion
18th 8.00am Holy Communion
10.30am Morning Praise
6.30pm Evensong

Children's Society Concert featuring Keighley Amateurs Junior Singing Club to be held in St. Wilfrid's Church Hall on Saturday, 26th April at 7.30pm. Tickets £3.50 for adults and £1.50 for children (refreshments included) from committee members.

Sunday Club for children and young people meets 10.30-11.30am in the church hall. Contact Jackie on 569203 for details.

Livewires Toddlers Group meets 10.00-11.30am in the church hall on Mondays. Contact Ruth on 560081 for details.

St. Lawrence's Church Hall is available for hire for community events (£9.00 per hour) and for children's parties (one payment of £30.00). To make enquiries, contact our bookings secretary, Mrs A. Shoebridge on 564690.

ELDWICK RIDING CLUB

The club has been running in the village for over 35 years, and is only thriving due to its popularity with members and support from local businesses. Many of our members are not from the village and I am sure there are many horsey villagers who don't know much about us.

And our 2008 event dates are:
Wed. 23rd April - 1st Training Night
Sun. 27th April - ERC First Points Show.
Sat. 10th May *First Dressage Event*
Wed. 21st May - 2nd Training Night
Sun. 25th May - ERC Second Points Show.
Wed. 18th June - 3rd Training Night
Sun. 22nd June - ERC Third Points Show.
Sat. 5th July *Second Dressage Event*
Wed. 23rd July - 4th Training Night
Sun. 27th July - ERC Forth Points Show
Sat. 6th Sept. *3rd Dressage Event*
Wed. 24th Sept. - 5th Training Night
Sun. 28th Sept. - ERC Fifth Points Show
Sat. 15th November - Annual
Presentation Evening

Mon. 1st December - AGM
Further details on these events are available on www.eldwickridingclub.co.uk or by contacting Kate 07785 275790

SIMPSON'S ELECTRICAL SERVICES (ELDWICK)

HOUSEHOLD INSTALLATION AND
MAINTENANCE WITH A PROFESSIONAL
FRIENDLY COMPANY

TEL: 01274 563794

FOR FREE ESTIMATES
WHERE SERVICE COUNTS
CITY & GUILDS
I.T.B. & P.E.R.A. CERTIFICATED

SERVICES AT THE METHODIST CHURCH

13th April

10.30 am Rev Ruth Parry

20th April

10.30 am Mrs Lynne Keating

27th April

9.15 am Communion Rev Ruth Parry
9.30 am Big Breakfast
10.30 am Communion Rev Ruth Parry

4th May

10.30 am Miss Diane Greenwood

11th May

10.30 am Communion Rev Ruth Parry
12.30 pm Sunday Lunch
contact 01274 566641

18th May

9.15 am Communion Rev Ruth Parry
10.30 am at St Lawrence's

25th May

9.30 am Big Breakfast
10.30 am Mrs Judith Craven

REGULAR MONTHLY EVENTS

1st Fri Friday Walk 9am

3rd Sun 9.15am Holy Communion

4th Sun 9.30am BIG BREAKFAST

Hand Bell Group - Alternate Tues

CHURCH HALL BOOKINGS

Eldwick Methodist Church Hall is available to the community for events and children's party, our newly refurbished kitchen is ideal for catering.

To enquire about dates please contact the booking secretary Phil on 774526

www.eldwickmethodistchurch.co.uk

Mrs Wendy P. Clarke

Piano Teacher and Accompanist
33 years experience

has vacancies for children and Adults
ABRSM Piano and Theory exams
or play just for fun

For more information contact

01274-567611

Pick up your euros
and US dollars
at your Eldwick
Post Office® branch

No commission to pay
No need to pre-order

Plus 70 currencies available
through our pre-order service.

ELDWICK DRIVING SCHOOL

- ✓ Fully qualified female instructor
- ✓ Dual controlled car
- ✓ Competitive rates
- ✓ Patient and friendly
- ✓ Door-to-door service
- ✓ Tuition to suit individual needs

For further information, call Sue

Tel: 07767 875267 / 01274 510785

REWARD FROM ELDWICK NEWSLETTER ONLINE

When the Newsletter team decided to put each monthly issue on-line it was mainly for the benefit of those, both near and far, who have had connections with Eldwick and the like to keep in touch with current events.

Last month, for the first time, a further benefit of our on-line facility was realised when, by 'googling' for a name in search of family history, a recent article from this back page was displayed on the researcher's screen and she was quick to get in touch for further information.

The article in question was from last year, entitled, 'If Walls Could Speak', all about the Brick Kiln House/Park House estate along Otley Road, and its occupants, principally the Pollard and Barron families, which in turn could help develop the story of the Eldwick and Bingley 'Barrons'. One member of the family, born in 1917, even has an e-mail address of her own and is keen to supply new information in return for whatever can be found in the Eldwick archive.

Originating from Bradley in the parish of Kildwick whose records date from the 16th century, the Barrons began as yeomen farmers but by the 19th century were spread into Bingley and Micklethwaite. John and William Barron were coal merchants and grocers but then became involved in transporting goods on the Leeds-Liverpool canal. So their business was in grocery, coal, stone, as carriers and boat owners and they were on the Bingley electoral register for 1868 with property on Gilstead Moor and Ferncliffe.

A major change had occurred by 1875 when Barron's Brickworks had been opened at the top of Heights Lane and, six years later, John Barron was living at Park House in Otley Road, Eldwick. William remained at the original family home that had been established in Micklethwaite, close to the wharves, stables and yards on the canal which was one Barron base.

The other became known as 'Barron's Yard' and was near the Bingley Brick and Tile Offices in Park Road, near the station. There was local controversy when Barron's built their offices out of brick, what else? Letters to the press likened the structure to the obtrusive red brick Prudential Building in Bradford and must have been effective as there is no sign of such a building in Bingley today.

By 1889 the brick business had gone public as the 'Bingley Sanitary Tube and Lime Co Ltd' with nominal capital of £30,000, 7 acres of land at Hill Top Works, Eldwick, Manorial Rights to 19 acres at the site, plant, machinery, tools, tramways, sheds. The company traded successfully for the family until 1936 when, after

voluntary liquidation, the business was taken by others.

At one time John Barron lived at Claremont in Park Road, one of Bingley's 'brass castles', large villas built around the turn of the century and it was there that the 90 year old lady was brought up. John was involved with both public and community affairs, as he, like his father William held many offices, including Chairman of Bingley Urban District Council. In 1900 John helped raise funds for the new Wesleyan Chapel at Gilstead (built 1904), and both he and Emma Barron of Sheriff Lane were active supporters of the Wesleyan faith.

Soon the Barrons were boating limestone down from Skipton for Bingley's roads and footways and several Council contracts to sewer new streets brought a big demand for the firm's sanitary tubes.

In 1909 a local street was named after the family who continued to be involved in community affairs in Eldwick and Bingley. Park House had a big enough garden, stretching all the way up Otley Road to hold garden parties for local fund-raising. After supporting the Wesleyan cause, since Mary Ellen, John's first wife, was a Wesleyan, the family in Eldwick helped raise money for Eldwick's St. Lawrence Church. John Barron said he was broadminded enough to attend both C of E and Wesleyan services, although he did say, "Mrs Barron is a Wesleyan and occasionally attends the Established Church". John was involved with the Eldwick Smallholders Society and at one of the summer shows was invited to auction off the produce, declaring the local inhabitants deserve to pay dearly for the privilege of living in Eldwick.

James H Barron, born in 1874, had sporting prowess which was first revealed in a report of his own wedding in 1897 to Ada Lavinia Pollard. Titled, 'Wedding of a Bingley Footballer', it was said "the bridegroom is well known for his connection with Rugby football, having been a member of the Yorkshire XV, and also of last season's English team". More was said in the press about his daughter's wedding in 1935 when Amy Dorothy Pollard Barron married Capt Ian Raymond of Johannesburg. "The bride was given away by her father, a distinguished ex-international rugby player and Bingley industrialist. A Reception for about 70 guests was held at Park House and the happy couple will be making Wimbledon their new home".

Even at the end of his life, aged only 68, Mr. Barron of Park House had a funeral attended by many famous international rugby players and there are people in Eldwick today who remember him wearing



John Barron

his tasseled international cap walking down to the local shops in Otley Road.

Doubtless much more is to come from the family about one of Eldwick's more notable former residents and memories of village life long ago.

Birches Jazz

Following two very successful "gigs" the live five piece group have now agreed to play every other week on Wednesday nights. Admission is free and all are welcome. The next session is on Wednesday 23rd April and after that Wednesday 7th May starting at 8.30p.m.

PLANNING

08/01622/FUL Construction of first floor side extension and addition to pitched roof at 80 Otley Road.

08/01777/FUL Construction of porch to front of dwelling at 22 Glen Road.

BOND GARDEN SERVICES

SIMON BOND HEDGES TRIMMED
ELDWICK MOWING & TURFING
BINGLEY TREES FELLED/PRUNED
PLANTING

01274 567439
07790 415593
SIMONJBOND@HOTMAIL.CO.UK

NEWSLETTER ON LINE

The Eldwick newsletter can now be viewed on line. If you log on to the Eldwick Memorial Club, Birches website:
www.thebirchesclub.co.uk

C & J Bettles

Picture Framing Services

21 Mansfield Avenue
ELDWICK
Bingley
Tel: 01274 510252
Mobile: 07941 364274

K SUTCLIFFE

Prop: Graham Sutcliffe

Plumber Heating
Sanitary Engineer & Reg'd Gas Installer

15 Heaton Drive, Eldwick,
Bingley BD16 3DN
Tel: 01274 569328

Issue No. 353 April 2008

The Eldwick Village Society Newsletter.

Email: Eldwicknews@aol.com

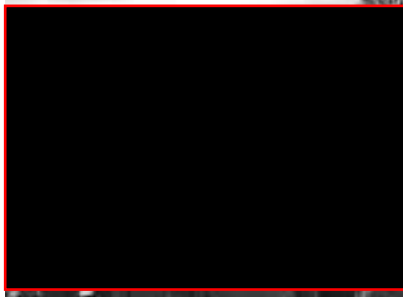


Gala Sponsors for 2008 MANNINGHAM CONCRETE

Pictured left, our Gala Queen and attendants:

Front row l-r: Amy Jowett, Emily Wightman,
Alice Garrett

Back row l-r: Jamie teale, Aysha Ali (Deputy),
Abbie Walker (Gala Queen), Mia Holt



MAGIC ROUNDABOUT

At a meeting of the All Party Road Traffic group in Menston on 1st April the thorny issue of traffic calming in Eldwick was raised yet again. After a lot of discussion, taking in the needs of all aspects of the community a solution was proposed i.e. a roundabout at the top of Sheriff Lane. To make this possible the hairdressers will have to be demolished to create space for the roundabout and make, much needed, extra parking.

Changes in Neighbourhood Policing Team

It is pleasing to report that the village of Eldwick is an area with a very low overall crime level, however we can all work hard to try prevent any further crimes occurring. There have recently been a couple of burglary dwellings in the area, these tend to focus around offenders who target the modern euro-profile locks found on newer houses and typical of houses with UPVC doors fitted. The locks can be forced with the use of molegrips allowing access to the property. For details ring Lewis MacKenzie at Crime Prevention 01274 474779.

There have also been reports of persons entering insecure properties and taking items from within, this must act as a timely reminder to us all to keep our doors and windows locked at all times, even if we are in the house or garden. It can take only a matter of seconds for someone to sneak into your property, remove your car keys and consequently drive away with your vehicle. If the doors and windows are locked and the car keys are out of view you are far less likely to be targeted in this way. Please also be aware of our 'Take me to bed with you' slogan, referring to the advice the force are passing out to the public in relation to car keys and preventing the overnight 'hanoi' style burglaries. If your keys are in your bedroom they are out of view and again provide a less likely target for those offenders who are looking for an easy opportunity to steal expensive, new or high performance vehicles.

Please report to the police any prowlers seen in your area, there have recently been reports of persons in gardens or trying door handles during both the day, evenings and overnight. These

matters are important and the police want to know about suspicious people in your area, reports can be made by calling 0845 60 60 60 6 at anytime, day or night, or for emergencies please ring 999.

There have been occasional instances where damage has been caused to vehicles parked in the area, please be vigilant and if you hear or see anyone causing damage please report this to the police.

Your neighbourhood policing team are interested in any issues that are ongoing in your area, please remember that if we are not aware of issues then we cannot help with them. Anti-social behaviour appears to have reduced in the last couple of months, however with the better weather arriving please make us aware if any problems arise.

Speedwatch has been conducted in the area in recent times, especially on Otley Road by the Post Office, drivers were advised and offences were dealt with. This will continue when necessary.

Your local Neighbourhood policing team have to report that PC 1687 Plummer has now left Bingley and is now working in another department within the force. Your area contacts are now Police Sergeant 5850 Diane Collins, Police Constable 3160 Tom Swift and Police Community Support Officers 142 Rachel Doyle, 175 Daniel Cole and 349 Sarah Bower. There are expected to be two new Police Constables who will be joining the team in the next few months, their details will be published when they arrive at Bingley. The team is overseen by Inspector Longden who is also based at Bingley.

The current officers can be contacted at Bingley Police Station on 01274 475331, please be aware that the officers are more than likely to be out and about on patrol or dealing with other incidents and

there is an answerphone service for messages to be left on this number. For queries that require a more urgent response please call the force on 0845 60 60 60 6, please also use this number to report a crime. **In an emergency dial 999.**

For non urgent queries officers can also be contacted via email:

Diane.Collins@westyorkshire.pnn.police.uk

Tom.Swift@westyorkshire.pnn.police.uk

Rachel.Doyle@westyorkshire.pnn.police.uk

Daniel.Cole@westyorkshire.pnn.police.uk

Sarah.Bower@westyorkshire.pnn.police.uk

If you do not know who is dealing with your investigation or report and wish to contact the team an email address has been set up for general enquiries, the issue or query can then be allocated to an officer who is best suited to dealing with it. The email address is:

hanpt3@westyorkshire.pnn.police.uk

The following officers have been issued with mobile telephones so they can be contacted by members of the public when they are on duty:

SGT 5850 Collins – 07736 086704

PCSO 175 Cole – 07736 085925

The force neighbourhood website has a page dedicated to the Eldwick and Gilstead areas, this is regularly updated with local news and crime reports, as well as offering useful crime prevention advice and contact details, please visit www.wynpt.org and select your area.

Finally please remember the crimestoppers number 0800 555111 where issues can be reported in confidence and anonymously, Crimestoppers also run the joint campaign 'Dob in a Dealer' and will be grateful to receive any information you have as to who is committing crime in your area.

Paul Rae C.A.R.P.E.T.S
Est. 1983

For All Domestic & Commercial Flooring

Sample & Measuring Service Available in Eldwick

Please call Paul on 07778 568845

Briarwood House, Preston Street, Bradford, West Yorkshire BD7 1LU
Tel: 01274 390254 Mobile: 07778 568845 Fax: 01274 727245

FOUND

Bike found in Recreation Field
Tel: 01274 566447 for details.

MAWSON ATTWELL & CO.

BUILDING, ELECTRICAL &

PLUMBING CONTRACTORS

Mobile No. 07966 199994

All your gardening needs at Cash & Carry prices.

**ACORN GARDEN
SUPPLIES**

Open Monday to Friday 8.30 to 5pm, Saturday 8.30 to 12.30 Local delivery available

UNITS E & F, CASTLEFIELDS IND. ESTATE, CASTLEFIELDS LANE, BINGLEY, WEST YORKSHIRE, BD16 2AF

TEL: 01274 563639 FAX: 01274 564383